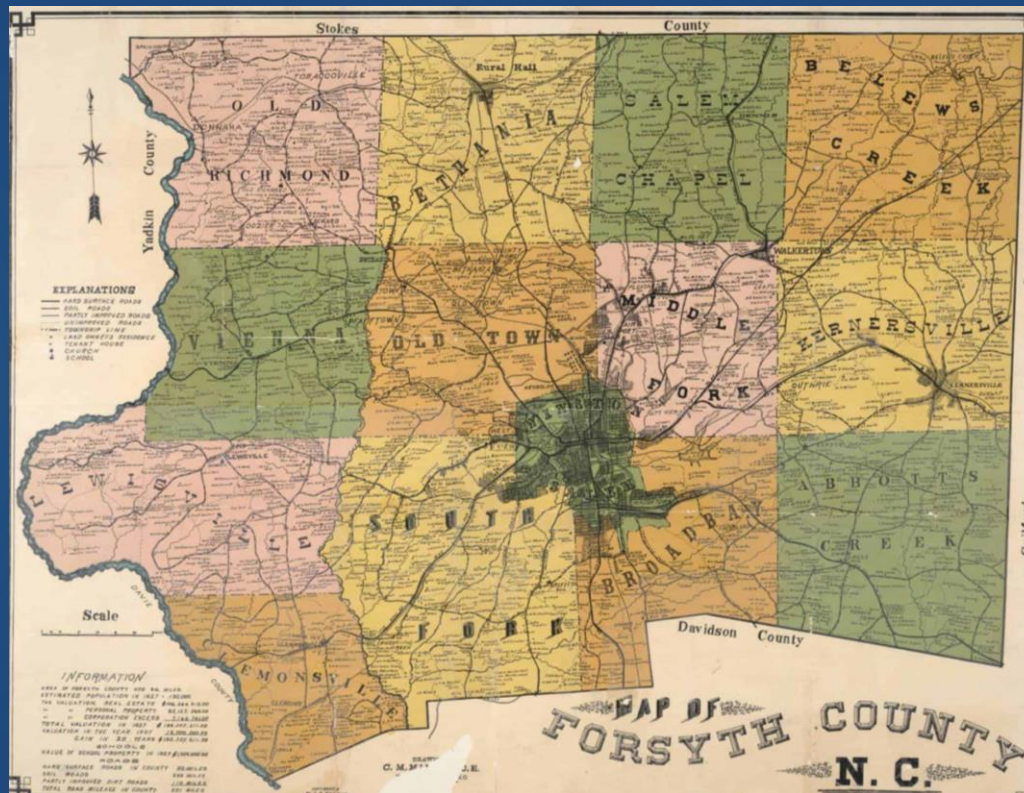


# Forsyth County Board of Commissioners Redistricting 2021



# Current Districts

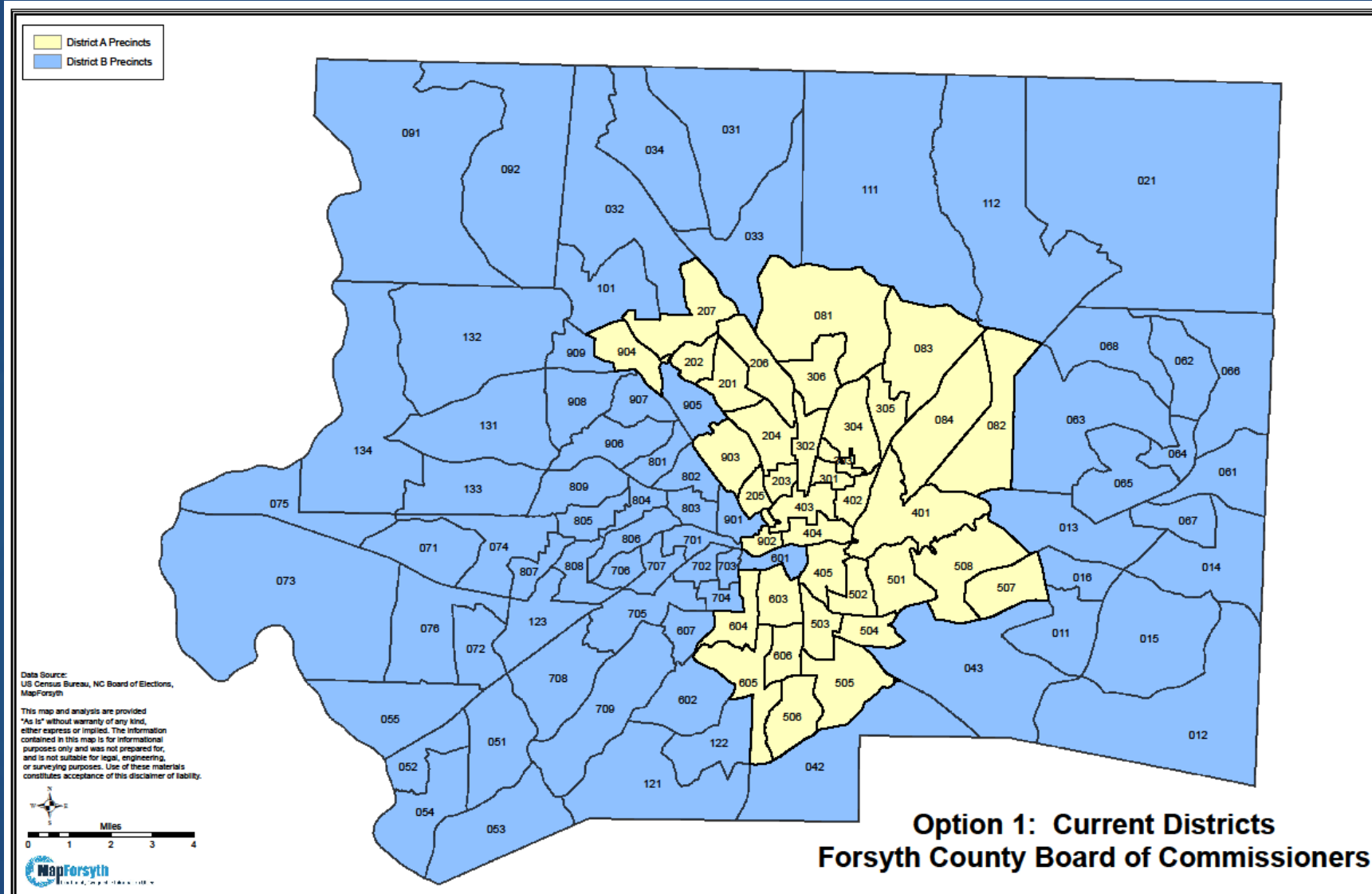
In 1989, the North Carolina General Assembly passed a Local Act establishing the electoral districts for the Forsyth County Board of Commissioners.

District A: primarily East Winston-Salem; 2 Commissioners

District B: the rest of the County; 4 Commissioners

At-Large: 1 Commissioner

# Current Districts



# Basics of Redistricting

Every 10 years, a Census is conducted, with the data released the next year. 2020 Census data was released mid-August of this year.

Pursuant to the U.S. Constitution's 1-person-1-vote requirement and NCGS 153A-22, local governments must redistrict if there is "substantial inequality of population" among electoral districts.

# Substantial Inequality

Substantial inequality exists if any district is either 5% larger or smaller than the ideal district.

An ideal district is one in which the population is exactly the same as the proportion of Commissioners elected from that district.

# Ideal Districts

For the purposes of determining ideal district size, we only look at Commissioners elected in each district.

District A elects 2 of 6 Commissioners, so it should ideally be  $\frac{2}{6}$  or  $\frac{1}{3}$  of the County population.

District B elects 4 of 6 Commissioners, so it should ideally be  $\frac{4}{6}$  or  $\frac{2}{3}$  of the County population.

Ideal District A: 127,530

Total County: 382,590

Ideal District B: 255,060

# There has been Similar Growth of Districts, but District A is proportionally Smaller

District A population: 123,420

District A population/Commissioner = 61,710

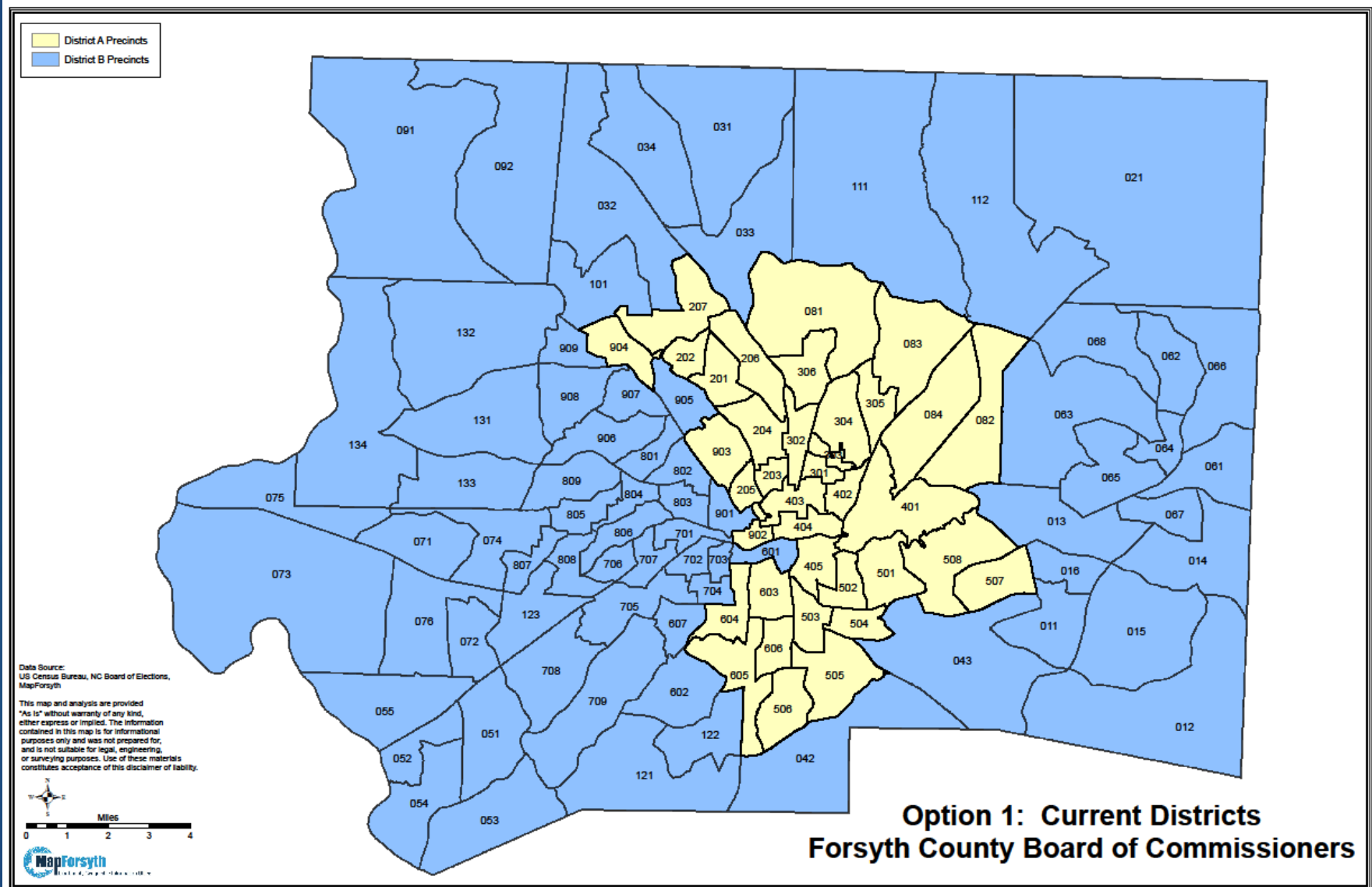
District B population: 259,170

District B population/Commissioner = 64,793

Ideal District/Commissioner =  $382,590/6 = 63,765$

**District A is 3.2% smaller than Ideal; District B is 1.6% larger than Ideal.**

# Because they are within 5% of Ideal, the Current Districts are an Option



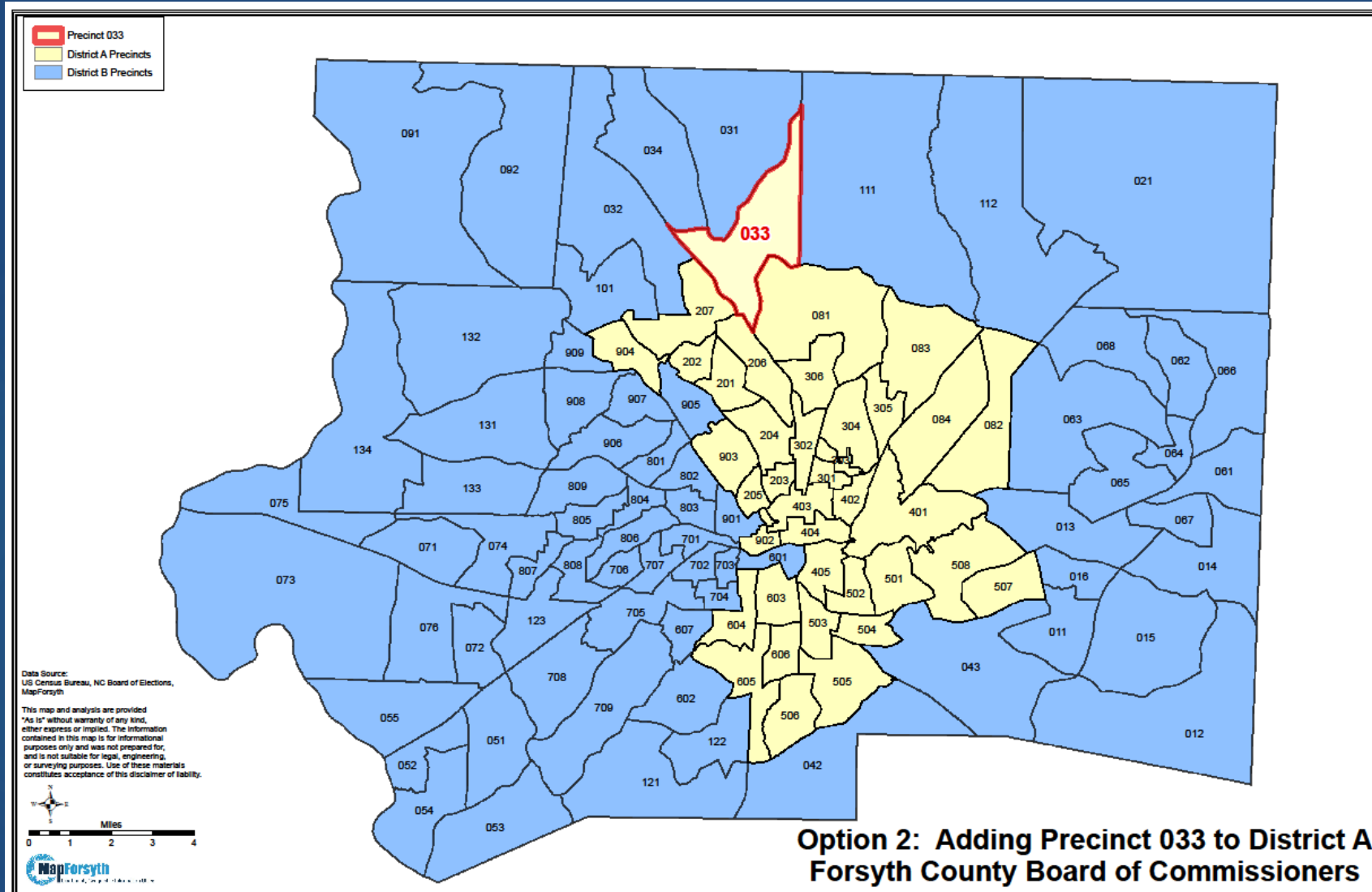


To make District A an Ideal Size, we would need to add 4,110 people to its Population

Precincts that Border District A and share Similar Characteristics:

Precinct 033	4,360
Precinct 122	4,886
Precinct 601	2,872
Precinct 905	4,961

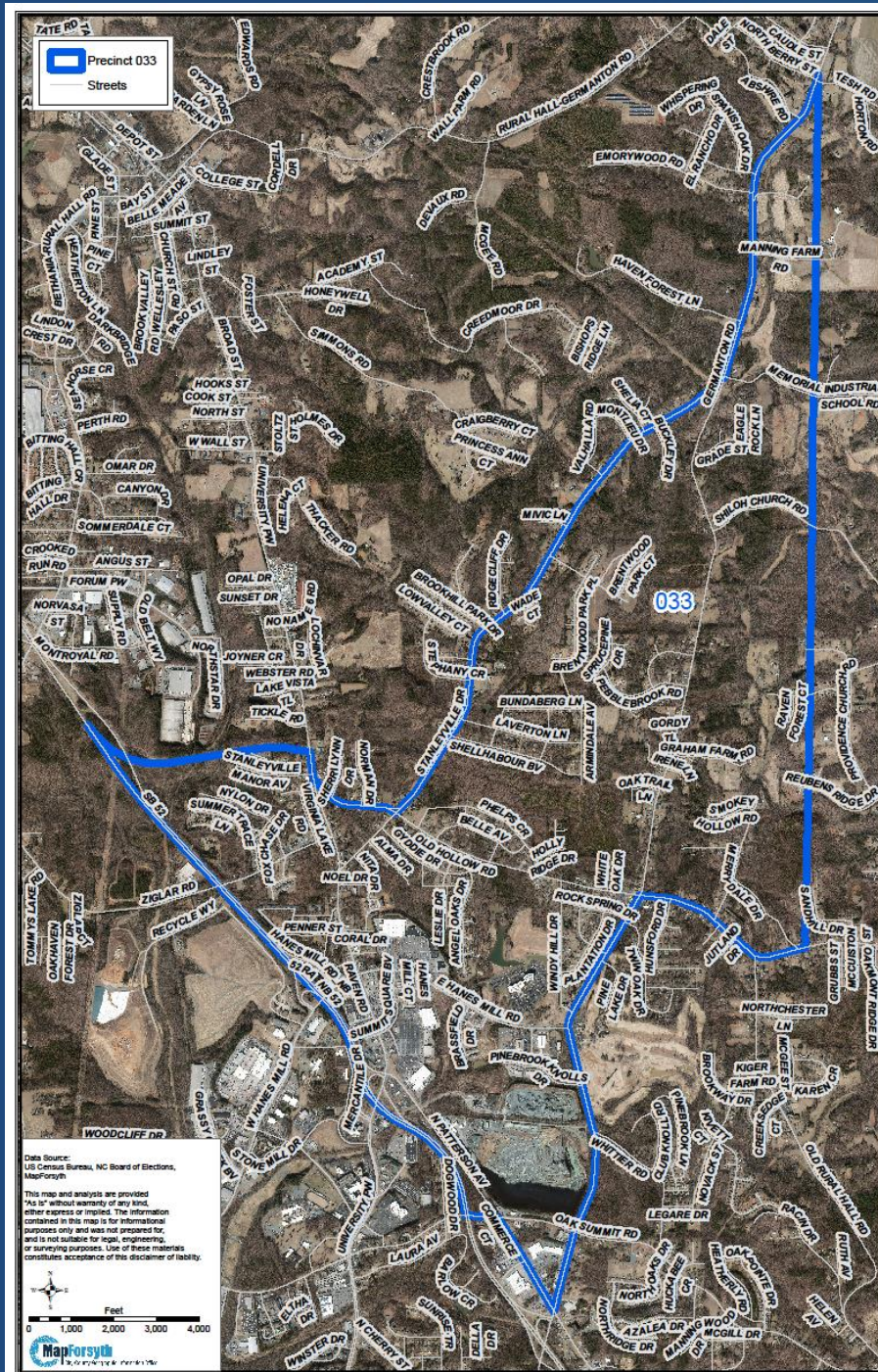
# Adding 033 to District A



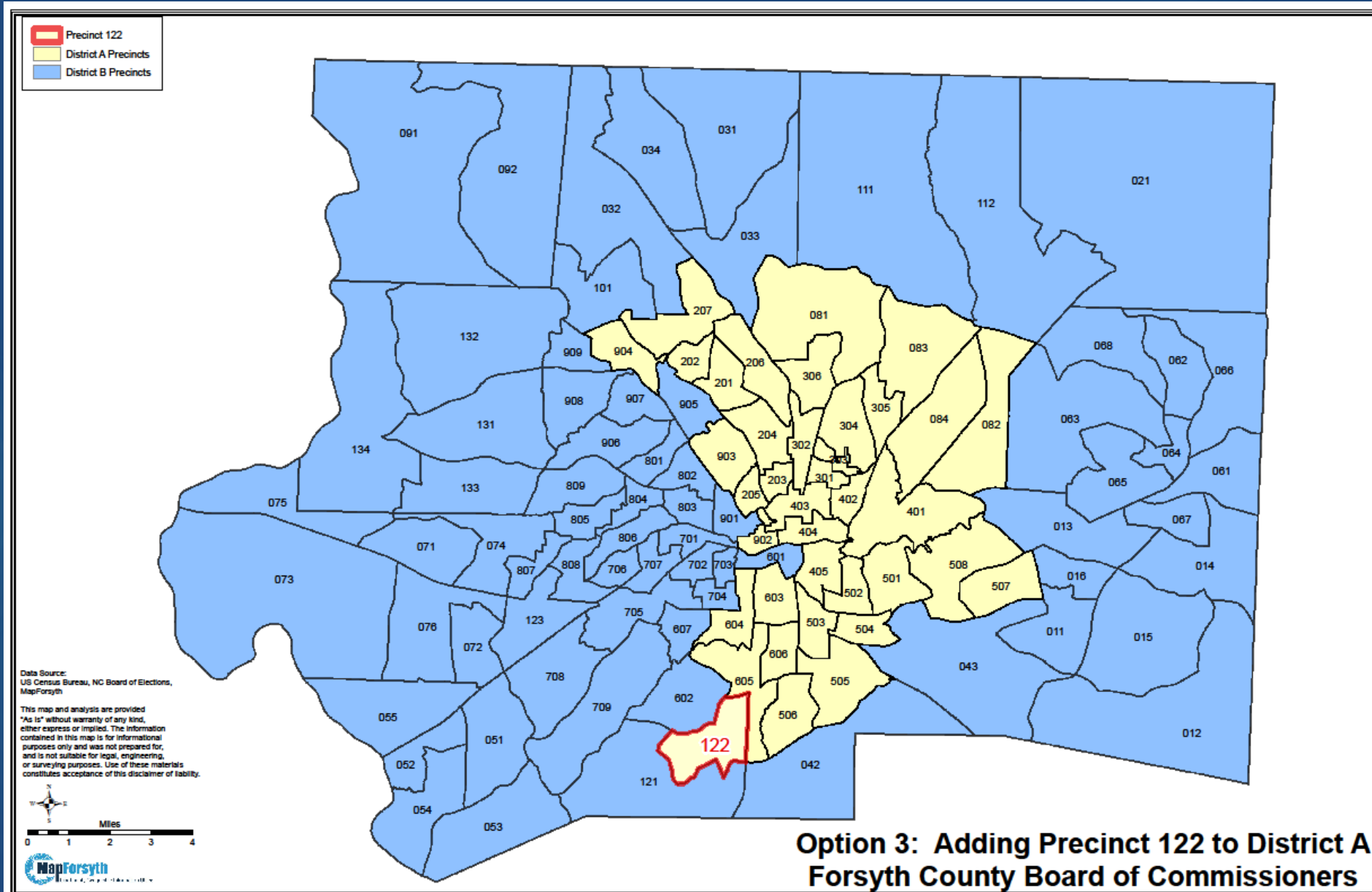
# Precinct 033

Precinct 033 runs along the commercial and industrial areas on the north side of Patterson Ave. and US 52 and stretches into rural areas along Germanton Road.

0.2% over Ideal Size



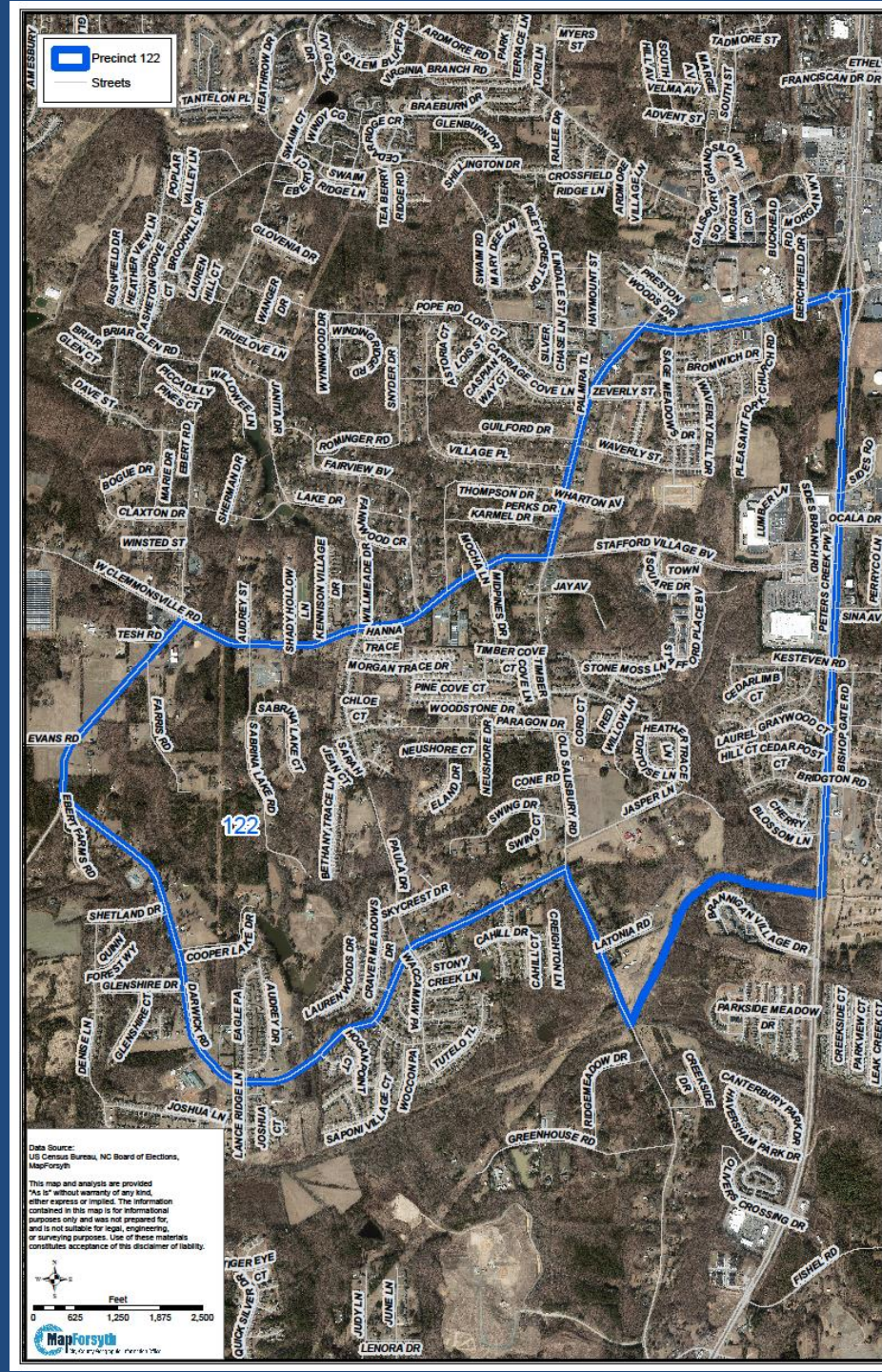
# Adding 122 to District A



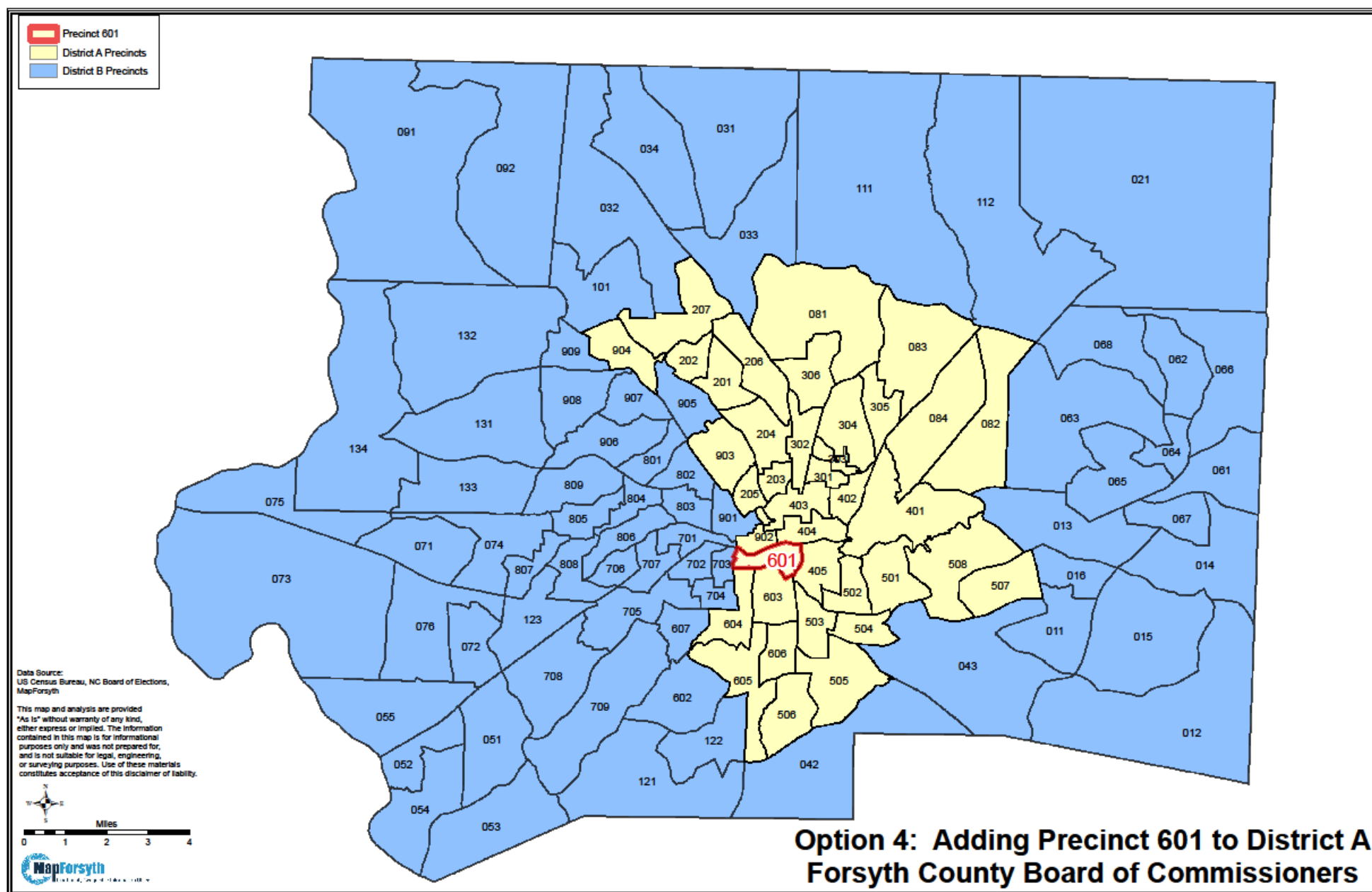
# Precinct 122

Precinct 122 runs west from Peters Creek Parkway where Lowe's and Wal-Mart are located into more suburban areas.

0.6% over Ideal Size



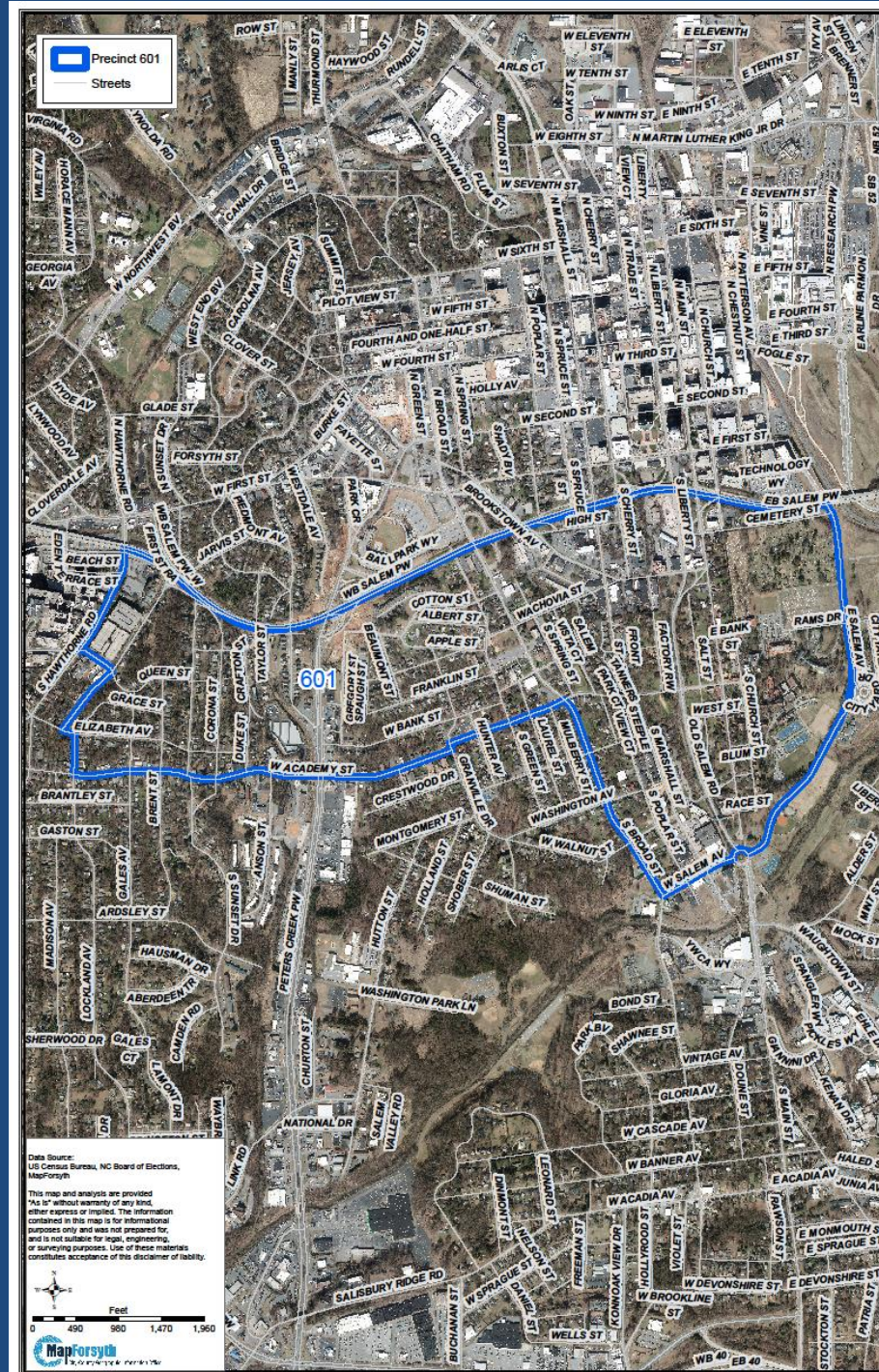
# Adding 601 to District A






# Precinct 601

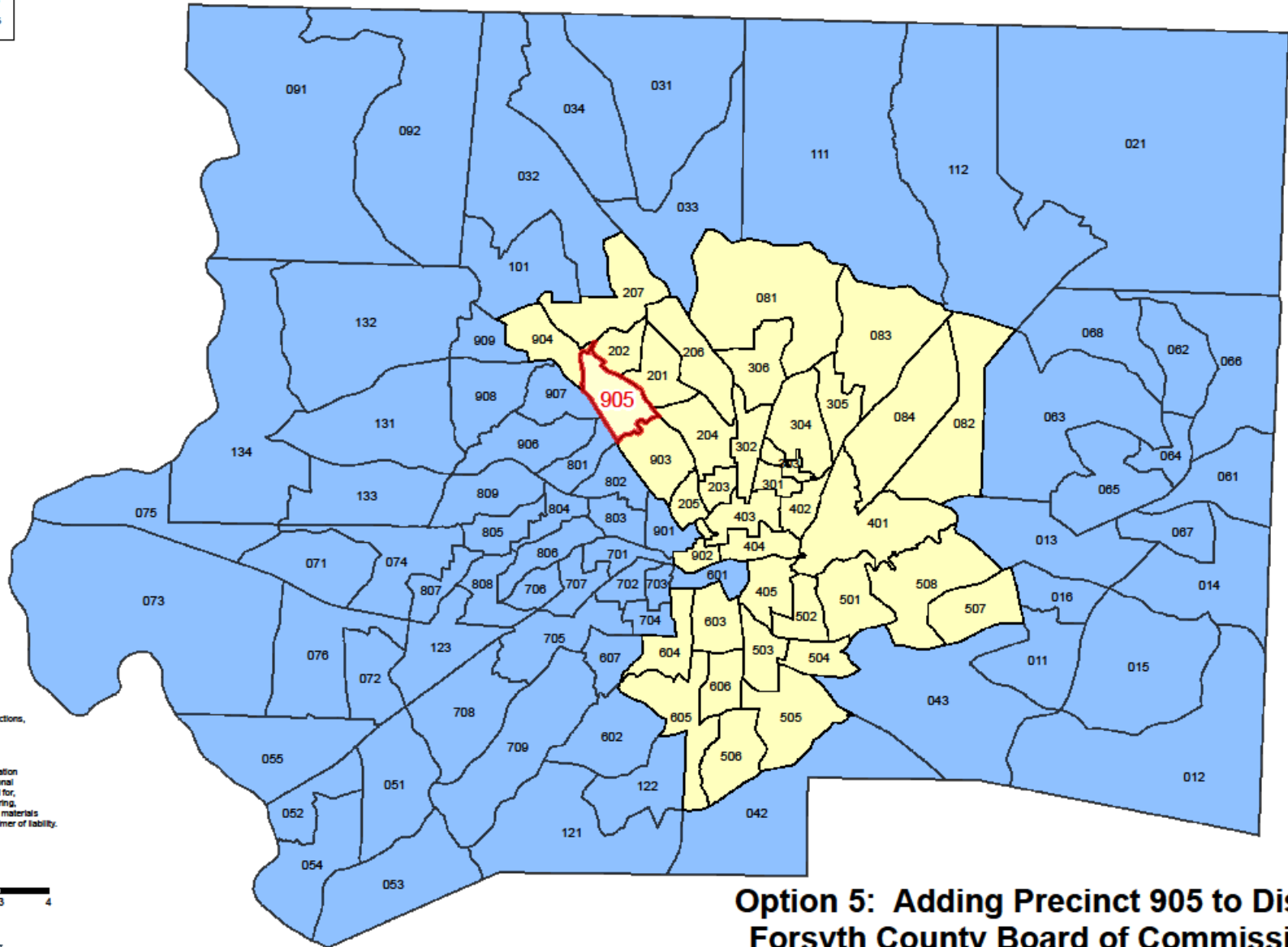
Precinct 601 runs along the southside of Salem Parkway from Salem College and Old Salem, through West Salem, and to the parking decks of Baptist Hospital along S. Hawthorne Road.

1.0% under Ideal Size



# Adding 905 to District A

-  Precinct 905
-  District A Precincts
-  District B Precincts



Data Source:  
US Census Bureau, NC Board of Elections,  
MapForsyth

This map and analysis are provided  
"As is" without warranty of any kind,  
either express or implied. The information  
contained in this map is for informational  
purposes only and was not prepared for,  
and is not suitable for legal, engineering,  
or surveying purposes. Use of these materials  
constitutes acceptance of this disclaimer of liability.



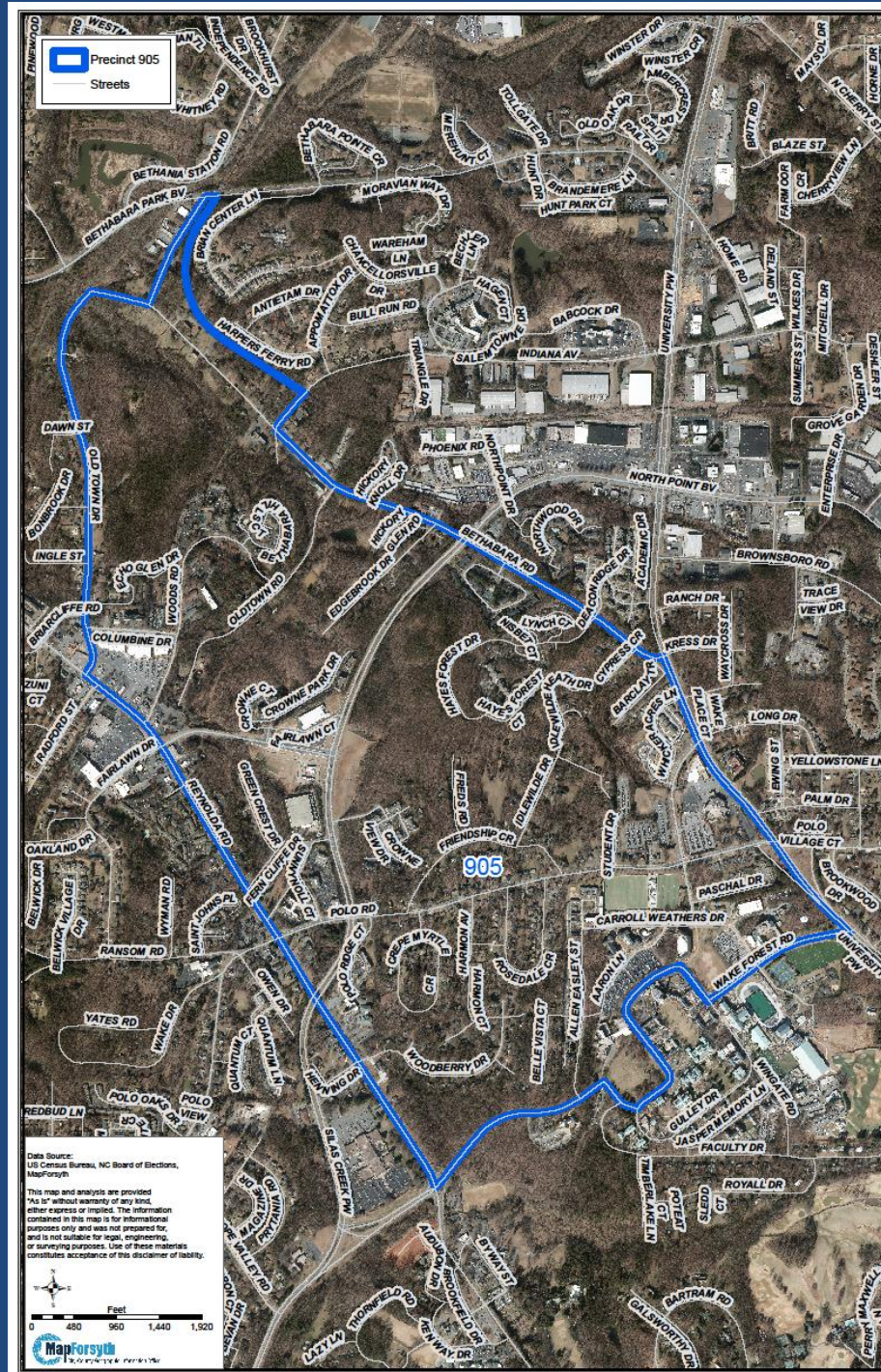
**Option 5: Adding Precinct 905 to District A**  
**Forsyth County Board of Commissioners**



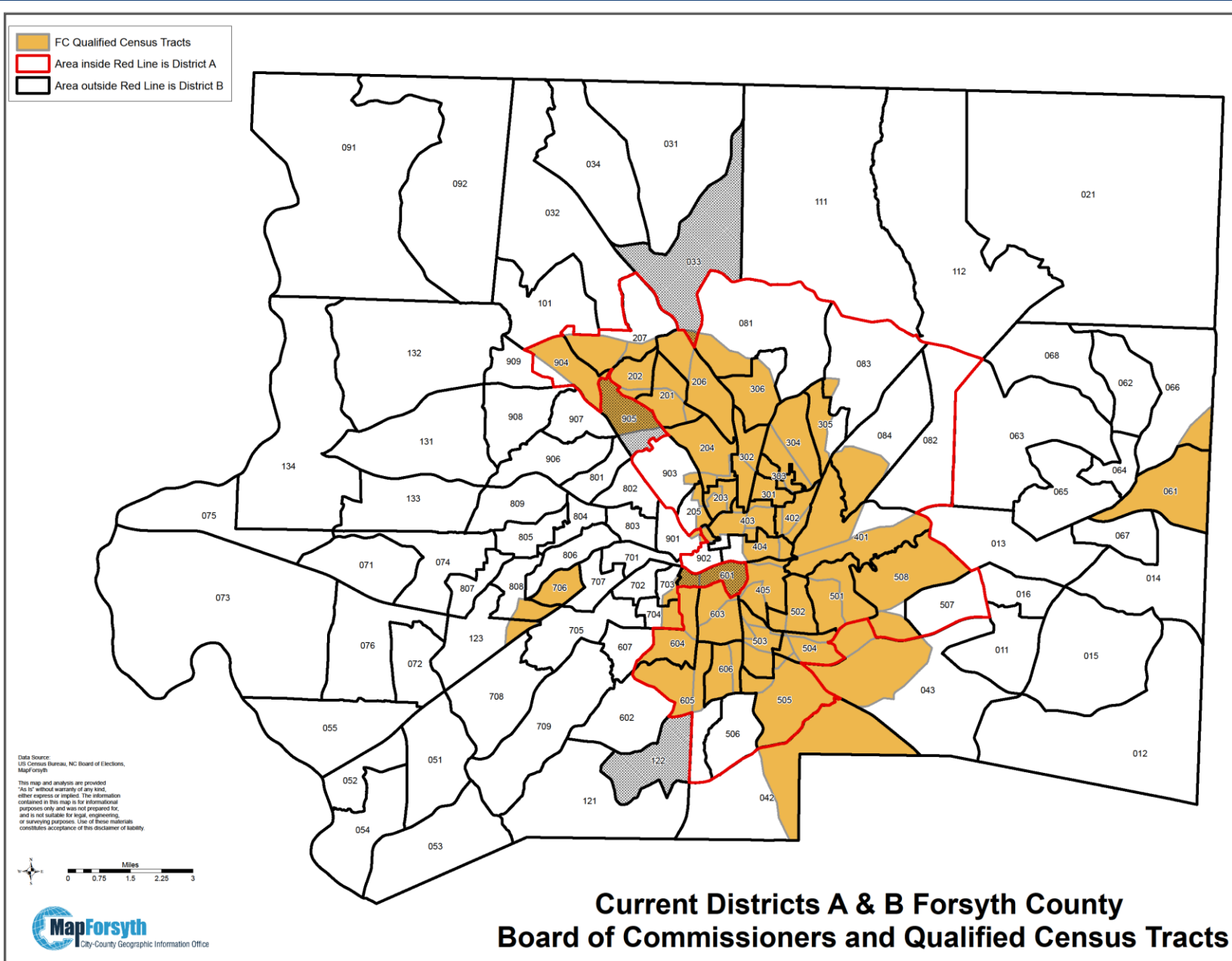
# Precinct 905

Precinct 905 includes the northern half of Wake Forest's campus and runs along the east side of Reynolda Road and the west side of University Parkway and Bethabara Road.

0.7% over Ideal Size



# Qualified Census Tracts



There is a large overlap between QCTs and District A. Precincts 601 and 905 are predominately in QCTs.